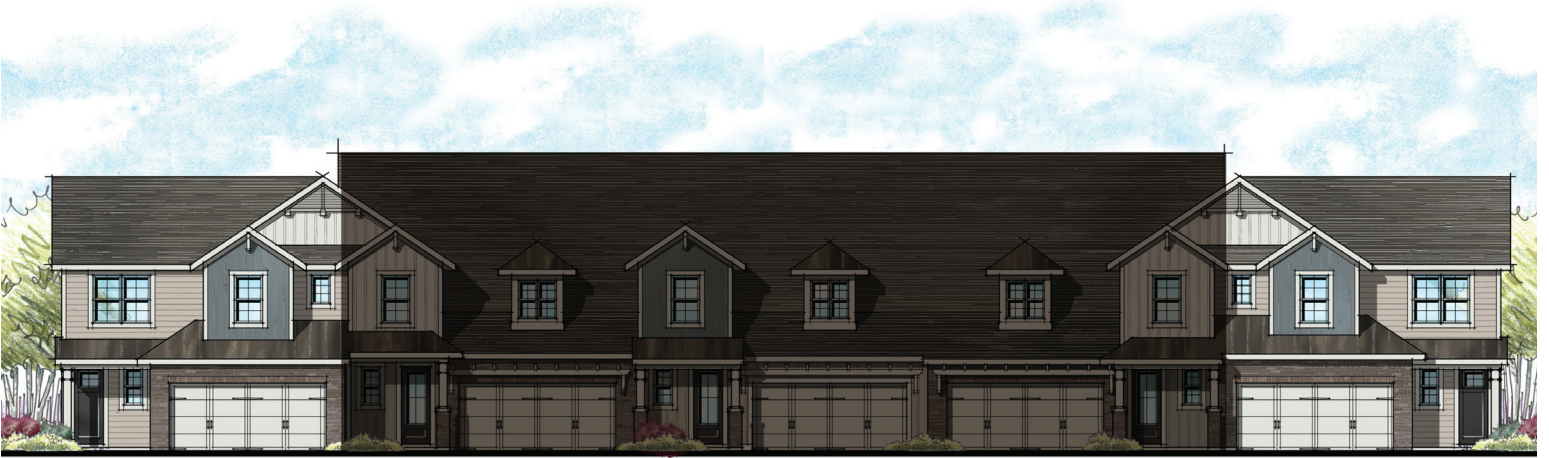


HAMILTON TOWNES

— VERDAE —

Built by award-winning local builder, LS Homes, with over 30 years of experience across the Upstate.



The Halton B

3 Bedrooms • 2.5 Bathrooms • 2,052 sqft.

These spacious end units offer desirable features, including:

- Owner's suite, large bath & walk-in closet on the main level
- Owner's suite bath with water closet and walk-in shower
- Covered outdoor living
- Open concept kitchen, family room & dining area
- Private laundry room and powder room on the main level
- Upstairs loft that can be used as a flex room
- Fenced backyards
- Attached two-car garage

Community Features:

- Convenient location with easy access to I-85, I-385, and Downtown Greenville
- Proximity to major retailers such as Target, Trader Joe's, Home Depot, Costco, a movie theater, and over 15 restaurants.
- Future connectivity to the Swamp Rabbit Trail
- Modern plans with cottage-style exteriors
- Maintenance-free living with lawn care included
- A close-knit, village-like atmosphere
- Pocket Parks Throughout

Hunter Hurst
(864) 423-3420
hhurst@cdanjoyner.com



**BERKSHIRE
HATHAWAY**
HOMESERVICES

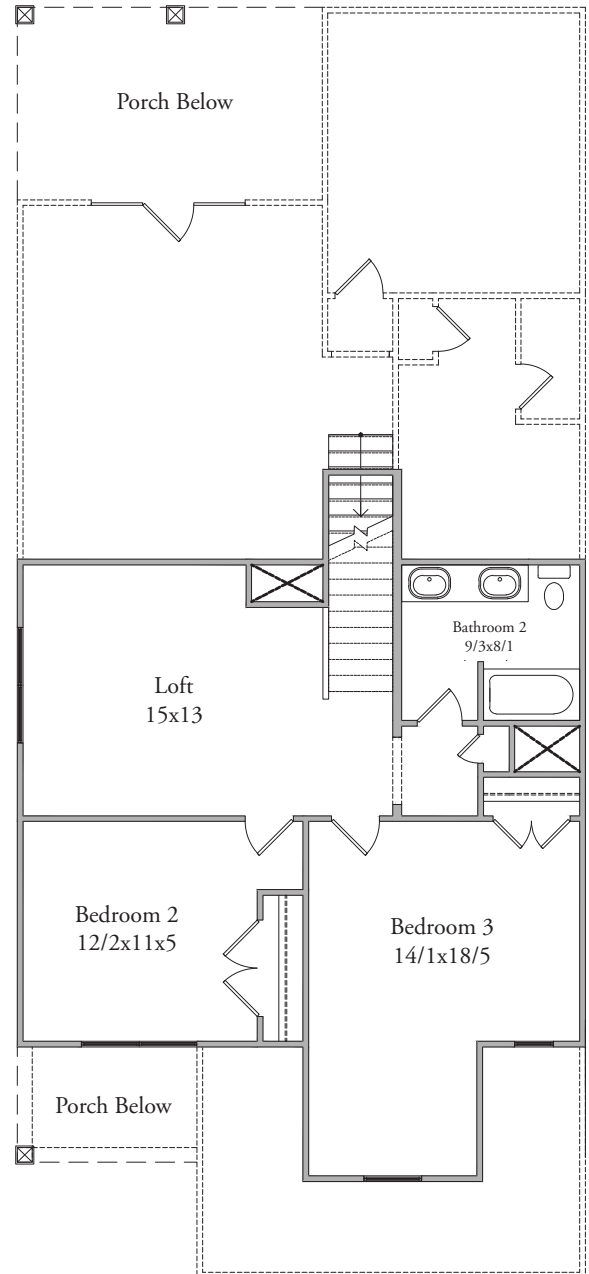
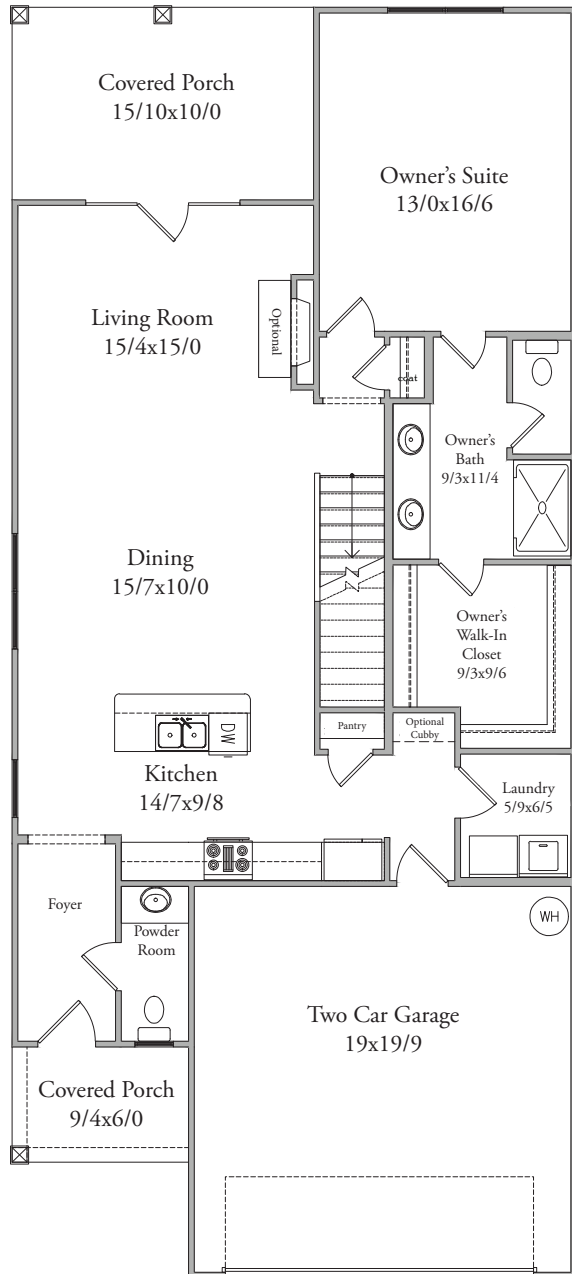
C. DAN JOYNER,
REALTORS®

All pictures and renderings shown are for illustration purposes only. Actual product will vary.



The Halton B

3 Bedrooms • 2.5 Bathrooms • 2,052 sqft.



All pictures and renderings shown are for illustration purposes only. Actual product will vary.

HAMILTON TOWNES

— VERDAE —

Built by award-winning local builder, LS Homes, with over 30 years of experience across the Upstate.



The Hudson B

3 Bedrooms • 2.5 Bathrooms • 2,256 sqft.

These large interior units offer turn-key living and desirable features, including:

- Owner's suite, large bath & walk-in closet on the main level
- Owner's suite bath with water closet and walk-in shower
- Front porch
- Two story foyer
- Covered outdoor living
- Open concept kitchen, family room & dining area
- Private laundry room and powder room on the main level
- Upstairs game room or flex space
- Fenced yards
- Attached two-car garage

Community Features:

- Convenient location with easy access to I-85, I-385, and Downtown Greenville
- Proximity to major retailers such as Target, Trader Joe's, Home Depot, Costco, a movie theater, and over 15 restaurants.
- Future connectivity to the Swamp Rabbit Trail
- Modern plans with cottage-style exteriors
- Maintenance-free living with lawn care included
- A close-knit, village-like atmosphere
- Pocket Parks Throughout

Hunter Hurst
(864) 423-3420
hhurst@cdanjoyner.com



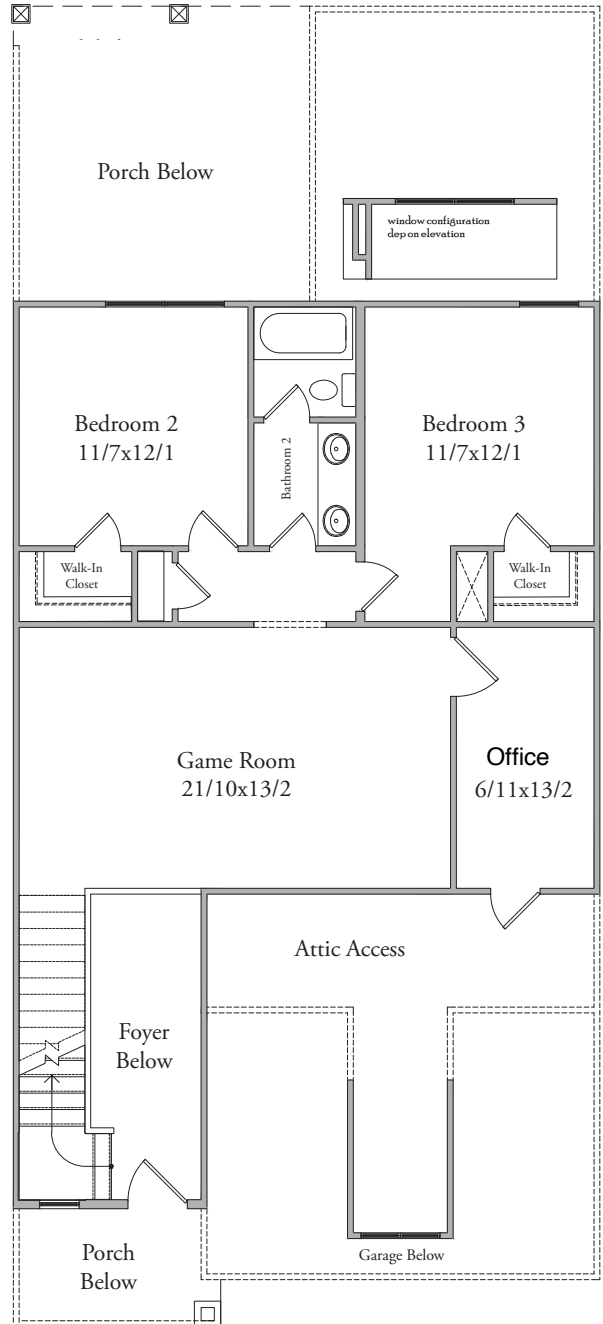
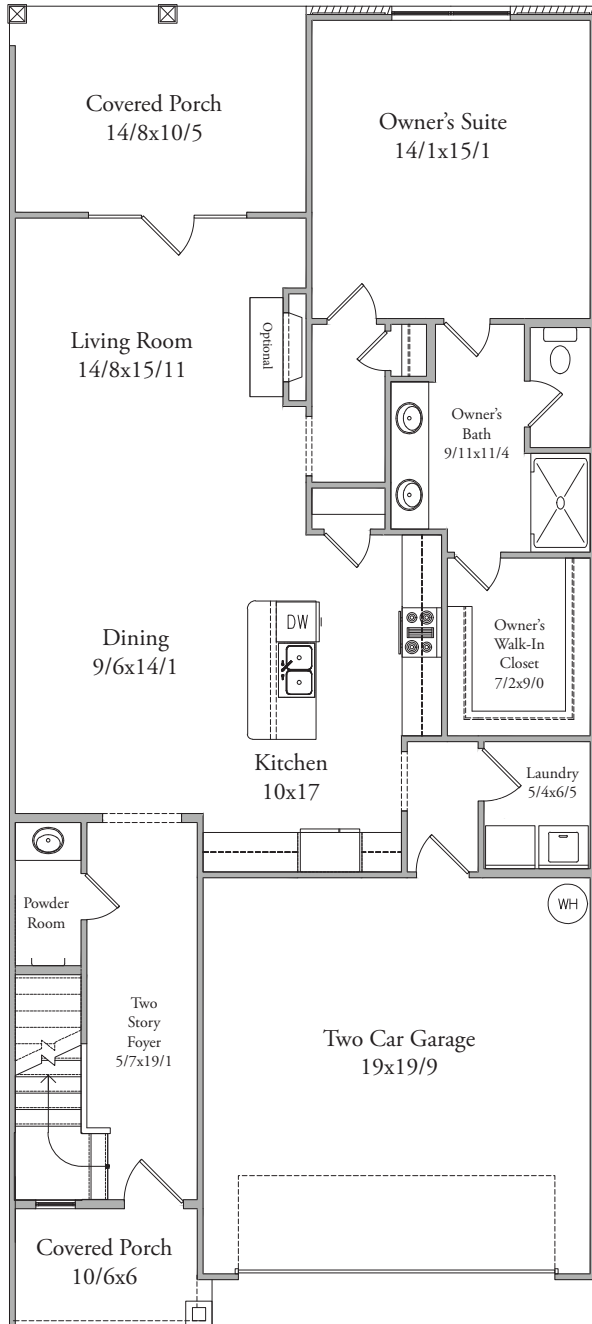
**BERKSHIRE
HATHAWAY** | C. DAN JOYNER,
HOMESERVICES | REALTORS®

All pictures and renderings shown are for illustration purposes only. Actual product will vary.



The Hudson B

3 Bedrooms • 2.5 Bathrooms • 2,256 sqft.



All pictures and renderings shown are for illustration purposes only. Actual product will vary.